



NOTES FOR IPWEA STANDARD DRAWINGS

ROADS SERIES

RS-001 – INDEX OF STANDARD DRAWINGS - ROADS

Index:

IPWEA - ROADS SERIES		
DRAWING No.	DESCRIPTION	VERSION
RS-001	Index of Standard Drawings – Roads	June-14
DRIVEWAYS		
RS-049	Driveways – Residential Driveways – Plan 1 of 2	June-14
RS-050	Driveways – Residential Driveways – Plan 2 of 2	June-14
RS-051	Driveways – Heavy Duty Vehicle Crossing	June-14
RS-056	Driveways – Rural Driveway	June-14
PATHWAYS		
RS-065	Pathways – Concrete Pathway – Construction Details	June-14
KERB AND CHANNEL		
RS-080	Kerb and Channel – Profiles and Dimensions – including Edge Restraints, Median & Channel	June-14
RS-081	Kerb and Channel – Residential Drainage Connections	June-14
KERB RAMPS		
RS-090	Kerb Ramps – Ramped Pedestrian Crossings	June-14
RS-091	Kerb Ramps – Ramped and cut through treatments – for Pedestrian Crossings, Slip Lanes and Medians	June-14
RS-092	Kerb Ramps – Installation of TGSi's – on ramped Kerb Crossings	June-14
RS-093	Kerb Ramps – Installation of TGSi's – on ramped Kerb Crossings – Application Examples	June-14
RS-094	Kerb Ramps – Locations and Configurations	June-14

DRAWING No.	DESCRIPTION	VERSION
PUBLIC UTILITIES		
RS-100	Public Utilities – Typical Service Corridors and Alignments	June-14
RS-101	Public Utilities – Typical Service Conduit Sections	June-14
RS-103	Public Utilities – Optic Fibre Pit	June-14
ROAD FURNITURE		
RS-130	Road Furniture – Street Name Sign and location (fingerboard)	June-14
RS-131	Road Furniture – Traffic Sign Installation Details	June-14
SUBSOIL DRAINS		
RS-140	Subsoil Drains – Details and Location	June-14
RS-142	Subsoil Drains – Access Points	June-14
PAVEMENT EXTENSION		
RS-170	Pavement Extension – Trenching and Widening	June-14

Remove drawing RS-170.

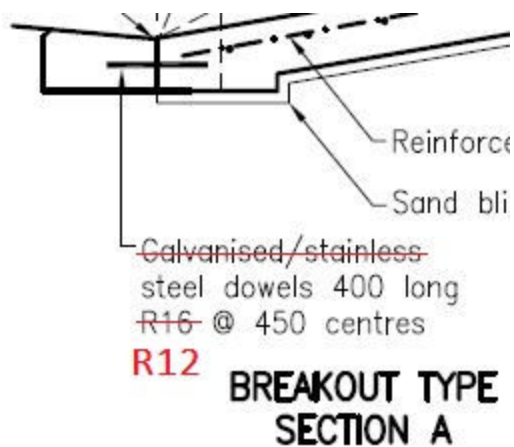
RS-049 – DRIVEWAYS – RESIDENTIAL DRIVEWAYS – PLAN 1 OF 2

No changes to drawing

RS-050 – DRIVEWAYS – RESIDENTIAL DRIVEWAYS – PLAN 2 OF 2

Changes detailed below:

Drawings:



Note changed as per above.

Notes:

~~11. **Driveways must achieve a high point of 250mm above invert of kerb to ensure stormwater is contained within the road reserve as per requirement of Q.U.D.M. (Queensland Urban Drainage~~

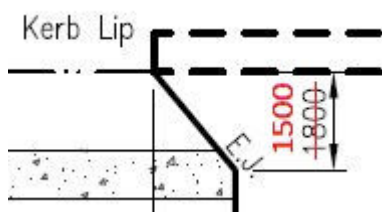
11: **Driveways must achieve a high point 150mm above invert, or top of kerb (whichever is higher), to ensure stormwater is contained within the road reserve.

~~14. Earthworks cut and fill batters from edge of driveway or path to natural surface to be maximum grade at 1 in 10 and fully turfed prior to council inspection.~~

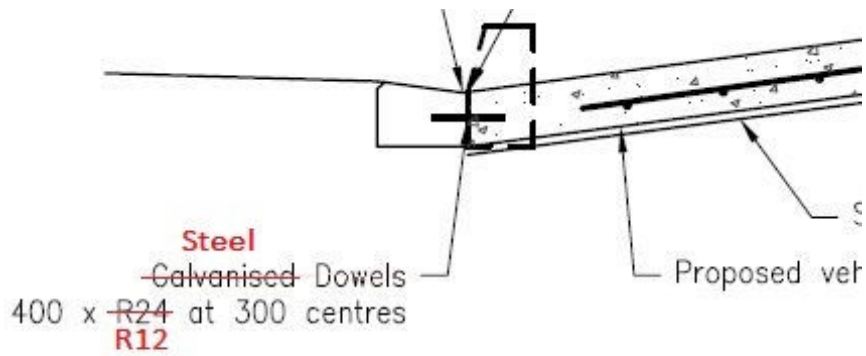
14: Earthworks cut and fill batters from edge of driveway or path to natural surface to be maximum grade at 1 in 10 and reinstated to existing conditions, preferably turfed where grass existing, prior to Council inspection.

RS-051 – DRIVEWAYS – HEAVY DUTY VEHICLE CROSSINGS

Drawings:



Layback/wing depth (1500mm) shown above to apply to all Types (ABC&D).



TYPICAL SECTION – CHANNEL RETAINED

Note changed as per above.

Notes:

4. Refer RS-049 for driveway prohibited locations.

4: Refer RS-049 and RS-050 for driveway prohibited locations and gradients.

RS-056 – DRIVEWAYS – RURAL DRIVEWAY

Drawings:

PIPE SIZE		
Catchment Area	ARI 2	ARI 10
<0.5Ha	375	450
<1.0Ha	450	525
<1.5Ha	525	600
<2.5Ha	600	2/450
<3.0Ha	2/450	2/525
<4.0Ha	2/525	2/600
<5.0Ha	2/600	(2)

For average daily traffic ≤ 2000, ARI 2
 For average daily traffic > 2000, ARI 10

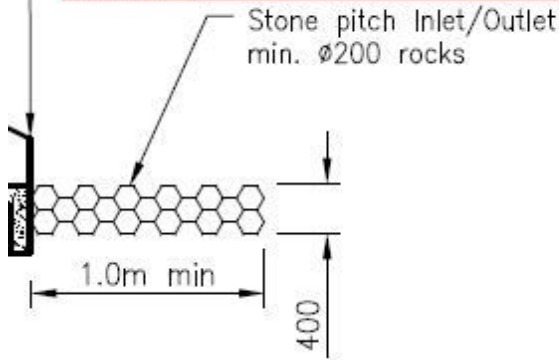
(1) Alternatives may be approved if supported with calculations in accordance with the provisions of the Queensland Urban Drainage Manual or under the provisions of Council's Planning Scheme.

(2) Seek consulting engineer advice.

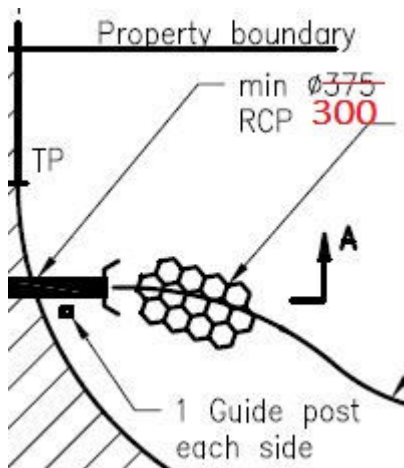
Remove the above table.

Endwalls to be concrete or min $\varnothing 200$ rocks grouted with cement.
 On roads with a marked centerline, ends to be sloping if:
 <4.6m from road edge for 60Km/h zone.
 <6m from road edge for 80Km/h zone.
 <9m from road edge for 100Km/h zone.

Refer to TMR Std Dwgs 1304, 1305, 1306 for sloping/square endwalls.



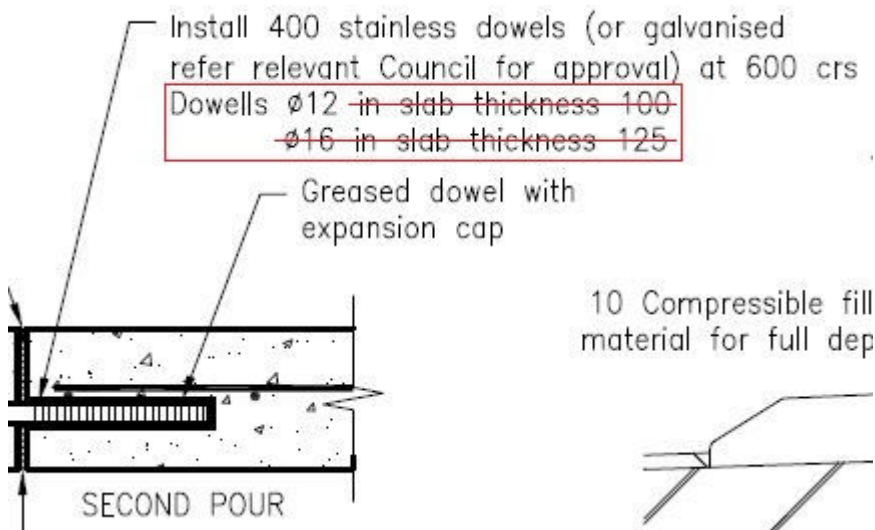
Remove the above enclosed note.



Note changed as per above.

RS-065 – PATHWAYS – CONCRETE PATHWAY – CONSTRUCTION DETAILS

Drawings:



Note changed as per above.

Notes:

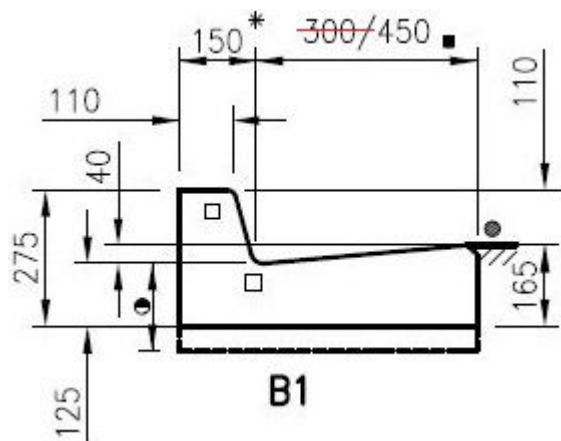
2. Concrete to be grade N32 AS 1379 and AS 3600 unless approved otherwise.

2. Concrete to be grade N25 AS 1379 and AS 3600 unless approved otherwise.

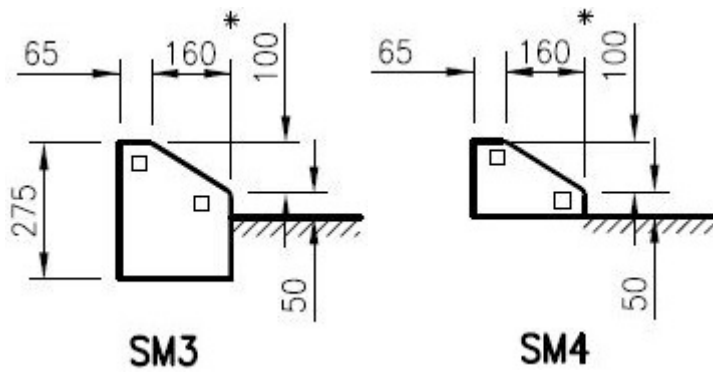
RS-080 – KERB AND CHANNEL – PROFILES AND DIMENSIONS – INCLUDING EDGE RESTRAINTS, MEDIAN & CHANNEL

Drawings:

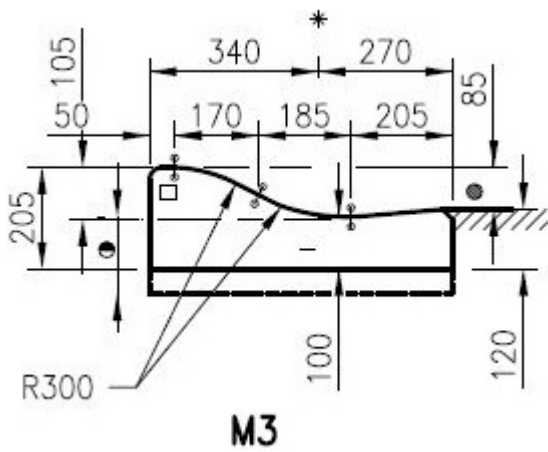
The profiles below with their changes (B1, SM3, SM4, M3 & Channel) are to be used unless otherwise approved by Council.



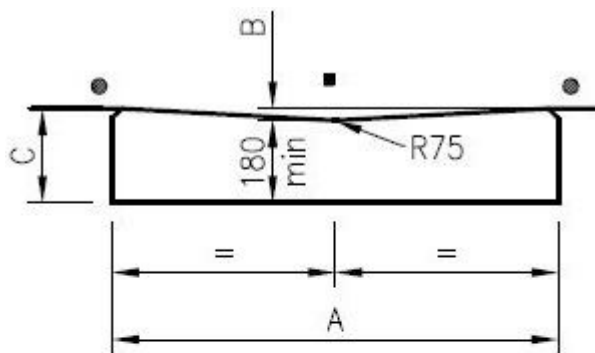
Barrier: B1 with 450 gutter.



Semi-Mountable: SM3 & SM4



Mountable: M3



DIMENSION		
A	B	C
600	25	200 min
900	40	220 min

For wider channel's refer to project drawings

CHANNEL

Channel/dish drain: with 900 width.

RS-081 – KERB AND CHANNEL – RESIDENTIAL DRAINAGE CONNECTIONS

Notes:

~~3. The requirements of AS 3500.3.1 Stormwater drainage – Performance requirements and the Queensland Building Code Regulations are to be met.~~

3. The requirements of AS3500.3.1 Stormwater drainage – Performance requirements and the National Construction Code (NCC) are to be met.

~~4. Roofwater/Stormwater drain outlets are not to be positioned within 5 metres of the upstream side of a catchpit (measured from the nearest catchpit component). Thus providing uncompromised capture efficiency of the catchpit. Outlets in this area are to discharge into the catchpit. The maximum discharge of stormwater drainage allowable to Council's kerb & channel street drainage system at any one location is 25 litres/second.~~

4. Roofwater/Stormwater drain outlets are not to be positioned within 5 metres of the upstream side of the catchpit (measured from the nearest catchpit component). Thus providing uncompromised capture efficiency of the catchpit. Outlets in this area are to discharge into the catchpit.

RS-090 – KERB RAMPS – RAMPED PEDESTRIAN CROSSINGS

No changes to drawing.

RS-091 – KERB RAMPS – RAMPED AND CUT THROUGH TREATMENTS – FOR PEDESTRIAN CROSSINGS, SLIP LANES AND MEDIANS

No changes to drawing.

RS-092 – KERB RAMPS – INSTALLATION OF TGSI'S ON RAMPED KERB CROSSINGS

No changes to drawing.

RS-093 – KERB RAMPS – INSTALLATION OF TGSI'S ON RAMPED KERB CROSSINGS – APPLICATION EXAMPLES

No changes to drawing.

RS-094 – KERB RAMPS – LOCATIONS AND CONFIGURATIONS

No changes to drawing.

RS-100 – PUBLIC UTILITIES – TYPICAL SERVICE CORRIDORS AND ALIGNMENTS

No changes to drawing.

RS-101 – PUBLIC UTILITIES – TYPICAL SERVICE CONDUIT SECTIONS

No changes to drawing.

RS-103 – PUBLIC UTILITIES – OPTIC FIBRE PIT

No changes to drawing.

RS-130 – ROAD FURNITURE – STREET NAME SIGN AND LOCATION (FINGER BOARD)

No changes to drawing.

RS-131 – ROAD FURNITURE – TRAFFIC SIGN INSTALLATION DETAILS

No changes to drawing.

RS-140 – SUBSOIL DRAINS DETAILS AND LOCATIONS

No changes to drawing.

RS-142 – SUBSOIL DRAINS – ACCESS POINTS

No changes to drawing.

RS-170 – PAVEMENT EXTENSION – TRENCHING AND WIDENING

DELETE DRAWING - DO NOT USE.